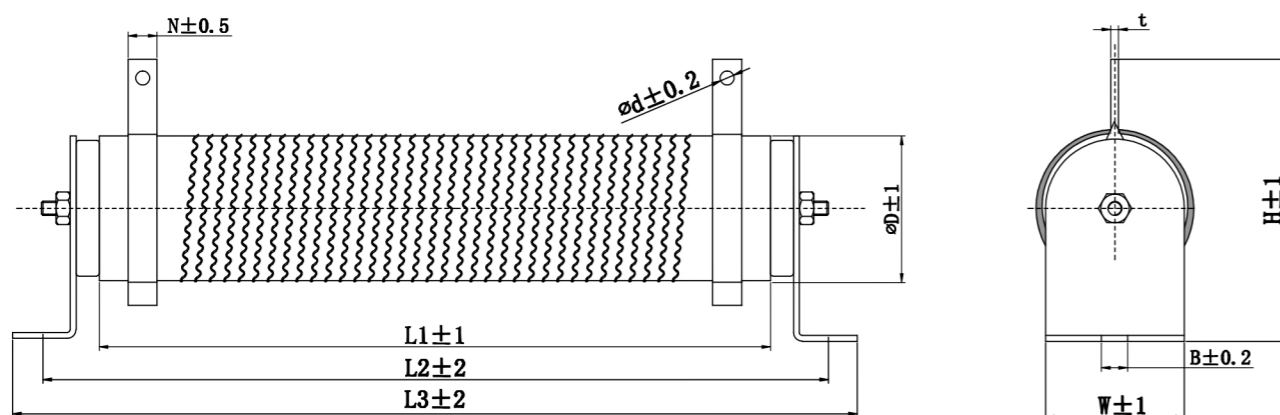
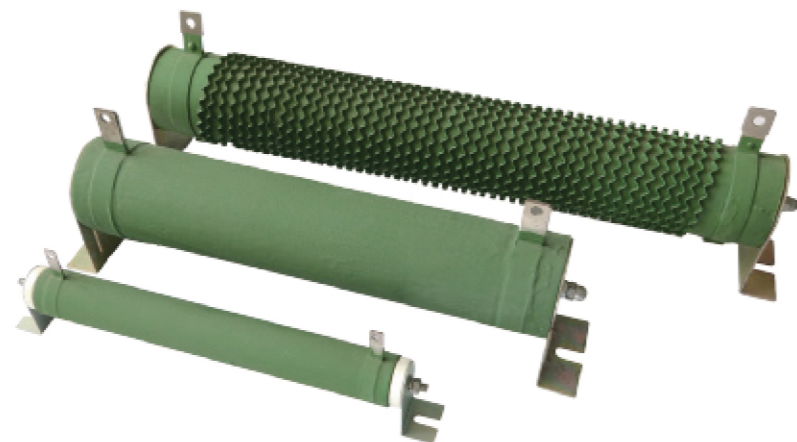


RXG20 功率型被漆线绕电阻器 15W-10000W

RXG20 Power Pinned Wire Wound Resistors 15W-10000W



产品特点 Features

- 高温负荷特性优良
Excellent high temperature load performance
- 功率范围较宽 Widepower range
- 高过载能力 High over loading ability
- 可提供安装套件 (选购件)
Assemmbly and fittings (available)

应用范围 Applications

- 电力分配, 负荷测试
Electric power distribution, load test
- 适用于功率电源
Applied for functional power supply
- 变频电源等领域
Variable frequency power source etc
- 用于工控的伺服系统中软启动和制动部分
Applied to the soft starting and breaking parts of industrial controlled servo drive system

订货示例 How to order

产品型号 Type	功率 Power	标称阻值 Nominal value	精度 Tolerance
RXG20	800W	51R	±5%

RXG20 功率型被漆线绕电阻器 15W-10000W

RXG20 Power Pinned Wire Wound Resistors 15W-10000W

主要性能技术指标 Main specification

额定功率	阻值范围	外形尺寸 Dimensions (mm)									
		L1	L2	L3	D	B	H	W	N	d	t
15W	R15 ~ 200R	45	/	/	16	/	36	16	6.0	3.5	1.0
20W	R15 ~ 200R	50	/	/	16	/	36	16	6.0	3.5	1.0
25W	R15 ~ 300R	45	/	/	20	/	42	20	6.5	3.0	0.5
30W	R15 ~ 300R	50	/	/	20	/	42	20	6.5	3.0	0.5
40W	R15 ~ 400R	70	/	/	20	/	42	20	6.5	3.0	0.5
50W	R15 ~ 500R	90	/	/	20	/	42	20	6.5	3.0	0.5
60W	R15 ~ 500R	90	120	145	28	5.0	68	28	8.0	3.8	0.6
80W	R2 ~ 600R	140	170	195	28	5.0	68	28	8.0	3.8	0.6
100W	R3 ~ 600R	170	200	225	28	5.0	68	28	8.0	3.8	0.6
120W	R3 ~ 600R	170	200	225	28	5.0	68	28	8.0	3.8	0.6
150W	R3 ~ 800R	215	245	270	28	5.0	68	28	8.0	3.8	0.6
200W	R43 ~ 1K	267	295	322	28	5.0	68	28	8.0	3.8	0.6
300W	R43 ~ 1K2	267	290	317	40	7.0	86	40	10	6.3	1.5
400W	R43 ~ 1K5	330	353	380	40	7.0	86	40	10	6.3	1.5
500W	R43 ~ 2K5	330	348	364	50	7.5	102	50	9.0	6.0	1.5
600W	R43 ~ 2K5	330	348	364	50	7.5	102	50	9.0	6.0	1.5
800W	R5 ~ 3K	300	325	350	60	8.5	118	60	14	6.3	2.0
1000W	R5 ~ 3K	300	325	350	60	8.5	118	60	14	6.3	2.0
1200W	R5 ~ 3K6	420	445	470	60	8.5	118	60	14	6.3	2.0
1500W	R5 ~ 3K6	420	445	470	60	8.5	118	60	14	6.3	2.0
2000W	R5 ~ 4K	600	625	650	60	8.5	118	60	14	6.3	2.0
2500W	R5 ~ 4K	600	630	662	70	8.5	132	70	14	6.3	2.0
3000W	1R8 ~ 4K	430	460	490	100	8.5	158	100	14	6.3	2.0
4000W	1R8 ~ 4K	430	460	490	100	8.5	158	100	14	6.3	2.0
5000W	1R8 ~ 5K	500	530	560	100	8.5	158	100	14	6.3	2.0
6000W	2R5 ~ 5K6	600	630	660	100	8.5	158	100	14	6.3	2.0
8000W	8R ~ 6K	750	780	810	100	8.5	158	100	14	6.3	2.0
10000W	8R ~ 6K	600	655	720	150	10	255	150	20	8.5	2.0